



Simple & Flexible

Assembled from only a few different profiles, the EverSafe System® can be customized to any External Working Platform (EWP) design.

Strong & Durable

Marine grade aluminum withstands the harshest offshore conditions, the riveted connections are extremely vibration-resistant.

Efficient Transport & Logistics

The EverSafe System® can be stowed efficiently for transport, up to 13 sets of EWP railings can fit into a 40' container, vs. only 3 sets of welded railings.

Local Assembly

Pre-assemble the railing segments right beside the EWP production and avoid the need for local road transport.

Sustainable

The EverSafe System® profiles are made from 70% recycled aluminum, saving energy and reducing the carbon footprint.



The EverSafe System®
is being delivered to
U.S. Offshore Wind Projects:

SOUTHFORK

REVOLUTION WIND

OCEAN WIND 1

SUNRISE WIND

Contact us

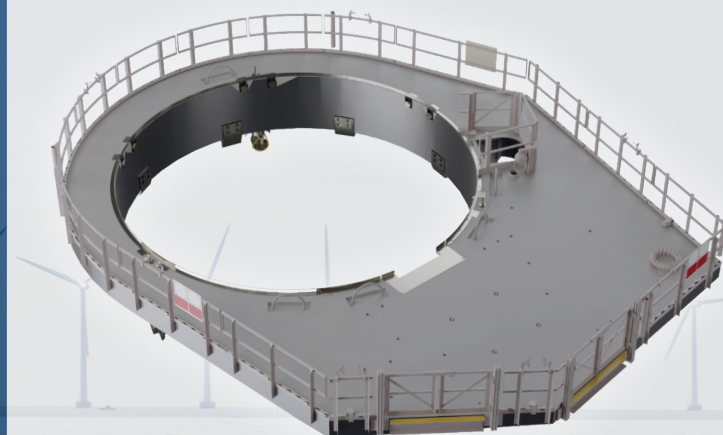


Markus Barner
mb@sabik-offshore.com
+49 (0) 1732 674 907

www.sabik-offshore.com



A Simple, Safe
& Sustainable
Railing Concept for
Offshore Wind



Discover the Revolutionary EverSafe System®...



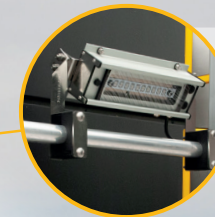
Fully Riveted, Weld-free

Using a proven riveting technology, there is no need for Non-Destructive Testing (NDT)



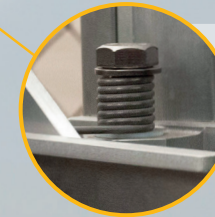
Integrated Cable-tray

The outside toe plate of the EverSafe System® contains a cable tray ensuring a clean and safe installation of electrical components along the railing and avoiding any trip hazard



Nav Aid & Lighting Integration

EverSafe System® profiles offer a high variety of fastening options for additional equipment: T-slots in the profiles and special designed brackets ensure a safe and reliable integration



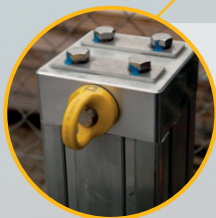
No Galvanic Corrosion

The EverSafe System® is made entirely from aluminum, and secured with stainless steel fasteners that avoid direct contact to prevent galvanic corrosion



Modular

The EverSafe System® can be adapted to any EWP design using just a few components: railing fence, swing gates, GUS-gate, inner & outer toe-plates



Extrusion

EverSafe System® components are made from customized extruded aluminum profiles, offering an optimal weight/stiffness ratio

